

4 Incubation Channels,
1 Emergency Test Channel!



Getein 1160

Immunofluorescence Quantitative Analyzer

Getein 1160 Immunofluorescence Quantitative Analyzer is a rapid, compact, user-friendly, multi-item analyzer that provides point-of-care testing and saves diagnosis time for patients. With **4 test channels** and **32 °C constant incubation environment**, Getein 1160 could offer timely, accurate and efficient testing for a wide range of scenarios.

Benefits



Constant Temperature

32°C constant test environment, allowing for more accurate test results



Multiple Channels

4 incubation channels
+
1 emergency test channel

- **Portable**

Dimensions :299 mm (W) × 276 mm (D) × 152 mm (H)
Weight :4 kg

- **Detection Performance Improved**

Reduced influence by temperature and improved detection accuracy

- **Convenient**

Easy to operate, user friendly interface

- **Instant Results**

Get results in 3-15 minutes

- **Reliable Accuracy**

Good correlation with CLIA method

- **Auto Cartridge Collection**

Automatically receive the used test cards when the test is finished

Technical Specifications



Application



Laboratory



Clinic



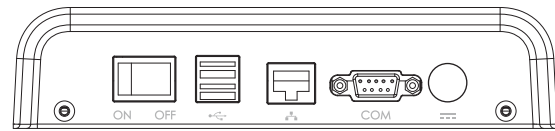
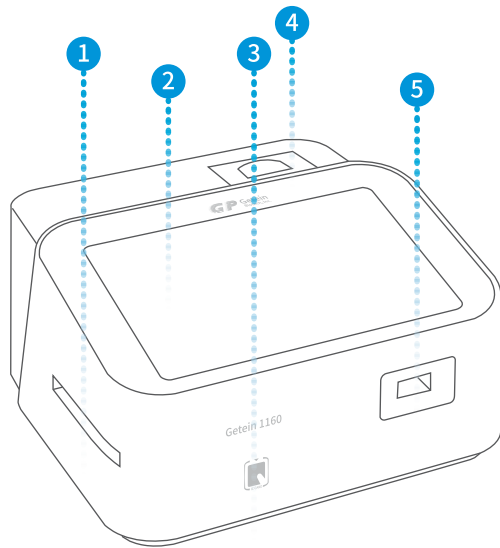
Emergency



Ambulance

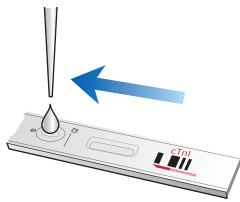


ICU



- 1 Card Exit
- 4 Built-in thermal Printer
- 2 10.1-inch Touch Screen
- 5 Card Inlet
- 3 RFID Card Recognition Zone

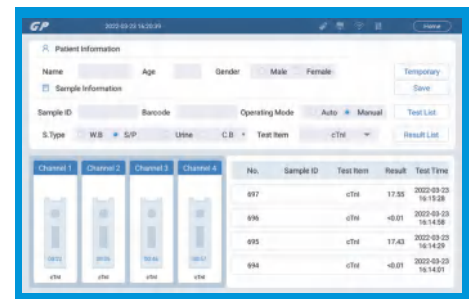
Operation Procedure



1 Sample dispense



2 Insert test cards, four allowed at the same time



3 Waiting in incubation



4 Result show and print

TEST ITEMS

Cat. #	TEST ITEMS	DISEASES	CUT-OFF VALUE	SAMPLE TYPES	MEASURING RANGE	SAMPLE VOLUME	REACTION TIME	QUALIFICATION
Cardiac Markers								
IF5001	cTnI	Myocardial infarction	0.10 ng/mL	S/P/WB	0.10-50.00 ng/mL	100 µL	10 min	NMPA CE
New IF5019	hs-cTnI	Myocardial infarction	0.040 ng/mL	S/P/WB	0.01-50.00 ng/mL	100 µL	10 min	NMPA CE
New IF5098	TnT	Myocardial infarction	14.0 pg/mL	S/P/WB	10.0-10000.0 pg/mL	100 µL	15 min	CE
IF5089	BNP	Heart failure	100.0 pg/mL	P/WB	5.0-5000.0 pg/mL	100 µL	10 min	CE
IF5002	NT-proBNP	Heart failure	300 pg/mL	S/P/WB	100-35000 pg/mL	100 µL	10 min	NMPA CE
IF5005	CK-MB/cTnI/Myo	Myocardial damage /infarction	CK-MB: 5.00 ng/mL cTnI: 0.10 ng/mL Myo: 70.0 ng/mL	S/P/WB	2.50-80.00 ng/mL 0.10-50.00 ng/mL 30.0-600.0 ng/mL	100 µL	10 min	NMPA CE
IF5012	CK-MB/cTnI	Myocardial damage /infarction	CK-MB: 5.00 ng/mL cTnI: 0.10 ng/mL	S/P/WB	2.50-80.00 ng/mL 0.10-50.00 ng/mL	100 µL	10 min	CE
IF5014	H-FABP	Myocardial damage	6.36 ng/mL	S/P/WB	1.00-120.00 ng/mL	100 µL	3 min	CE
IF5016	CK-MB/cTnI/H-FABP	Myocardial damage /infarction	CK-MB: 5.00 ng/mL cTnI: 0.10 ng/mL H-FABP: 6.36 ng/mL	S/P/WB	2.50-80.00 ng/mL 0.10-50.00 ng/mL 2.00-100.00 ng/mL	100 µL	10 min	CE
IF5018	CK-MB	Myocardial injury	5.00 ng/mL	S/P/WB	2.50-80.00 ng/mL	100 µL	10 min	CE
Coagulation Markers								
IF5006	D-Dimer	Venous thromboembolism	0.50 mg/L	P/WB	0.10-10.00 mg/L	100 µL	10 min	NMPA CE
Inflammation								
IF5003	hs-CRP+CRP	Cardiovascular inflammation /normal inflammation	3.0 mg/L 10.0 mg/L	S/P/WB/ Fingertip blood	0.5-200.0 mg/L	10 µL	3 min	CE
IF5007	PCT	Sepsis, bacterial infection	0.10 ng/mL	S/P/WB	0.05-50.00 ng/mL	100 µL	15 min	NMPA CE
IF5044	SAA	Bacterial/Virus infection	10.0 mg/L	S/P/WB/ Fingertip blood	5.0-200.0 mg/L	10 µL	5 min	NMPA CE
IF5090	SAA/CRP	Neonatal sepsis, Bacterial/virus infection	SAA: 10.0 mg/L CRP: 10.0 mg/L	S/P/WB/ Peripheral blood	5.0-200.0 mg/L 0.5-200.0 mg/L	10 µL	5 min	NMPA CE
IF5088	IL-6	Acute inflammation	7.0 pg/mL	S/P/WB/ Peripheral blood	1.5-4000.0 pg/mL	100 µL	15 min	CE
Renal Function								
IF5008	CysC	Acute and chronic renal diseases	0.51-1.09 mg/L	S/P/WB	0.50-10.00 mg/L	10 µL	3 min	NMPA CE
IF5009	mAlb	Diabetic nephropathy, hypertensive nephropathy	20.0 mg/L	Urine	10.0-200.0 mg/L	100 µL	3 min	CE
IF5010	NGAL	Acute kidney injury	Serum: 200.0 ng/mL Urine: 100.0 ng/mL	S/Urine	50.0-5000.0 ng/mL	10 µL	10 min	NMPA CE
IF5011	β ₂ -MG	Acute and chronic kidney diseases/tumours	0.80-3.00 mg/L	S/P/WB	0.50-20.00 mg/L	10 µL	3 min	NMPA CE
Diabetes Mellitus								
IF5017	HbA1c	Diabetes mellitus	3.80%-5.80%	WB	2.00%-14.00%	10 µL	5 min	NGSP NMPA IFCC CE
Metabolic Marker								
IF5031	25-OH-VD	Osteomalacia, osteoporosis	30.00-50.00 ng/mL	S/P	8.00-70.00 ng/mL	30 µL	30 min	CE
Thyroid Function								
IF5024	TSH	Thyroid malfunction	0.27-4.20 µIU/mL	S/P	0.10-50.00 µIU/mL	100 µL	15 min	NMPA CE
IF5022	T3	Hyperthyroidism, hypothyroidism	1.30-3.10 nmol/L	S/P	0.30-10.00 nmol/L	40 µL	15 min	CE
IF5023	T4	Hyperthyroidism, hypothyroidism	59.00-154.00 nmol/L	S/P	5.40-320.00 nmol/L	100 µL	15 min	CE
IF5067	ft3	Hyperthyroidism, hypothyroidism	3.10-6.80 pmol/L	S/P/WB	0.40-50.00 pmol/L	40 µL	15 min	CE
IF5068	ft4	Hyperthyroidism, hypothyroidism	12.00-22.00 pmol/L	S/P/WB	0.30-100.00 pmol/L	100 µL	15 min	CE

Cat. #	TEST ITEMS	DISEASES	CUT-OFF VALUE	SAMPLE TYPES	MEASURING RANGE	SAMPLE VOLUME	REACTION TIME	QUALIFICATION	
Reproduction/Fertility									
IF5013	HCG+β	Fertility	5.1 mIU/mL	S/P	5.0-100000.0 mIU/mL	100 µL	10 min	CE	
IF5055	LH	PCOS, infertility evaluation	Refer to User Manual	S/P	0.20-150.00 mIU/mL	100 µL	15 min	CE	
IF5056	FSH	PCOS, infertility evaluation and pituitary disorders	Refer to User Manual	S/P	0.20-150.00 mIU/mL	100 µL	15 min	CE	
IF5066	AMH	Fertility, PCOS, gonadal function, precocious/late puberty	Refer to User Manual	S/P	0.10-20.00 ng/mL	200 µL	15 min	CE	
IF5048	PRL	Infertility, gonadal disorders	Refer to User Manual	S/P	0.50-200.00 ng/mL	100 µL	15 min	NMPA CE	
IF5071	Prog	Infertility, evaluation of ovulation	Refer to User Manual	S/P	0.10-40.00 ng/mL	100 µL	15 min	CE	
NEW	IF5073	Testosterone	Female polycystic ovary syndrome, male testosterone insufficiency	Male: 1.75-7.81 ng/mL Female: 0.10-0.75 ng/mL	S/P	0.10-16.00 ng/mL	100 µL	15 min	CE
NEW	IF5074	E2	Ovarian function	Refer to user Manual	S/P	40.0-4800.0 pg/mL	100 µL	15 min	CE
Tumor Markers									
IF5053	tPSA	Prostate cancer	4.00 ng/mL	S/P	0.50-100.00 ng/mL	100 µL	15 min		
IF5072	fPSA	Prostate cancer	1.00 ng/mL	S/P	0.05-30.00 ng/mL	100 µL	10 min		
IF5050	AFP	Liver cancer, cancer of ovaries or testicles, etc.	7.0 ng/mL	S/P	2.0-500.0 ng/mL	100 µL	15 min	CE	
IF5051	CEA	Cancer marker: colon cancer etc.	4.7 ng/mL	S/P	2.0-500.0 ng/mL	100 µL	15 min	CE	
Infectious Disease									
IF5057	Anti-HCV	Hepatitis C	1.00 S/CO	S/P	1.00-20.00 S/CO	100 µL	15 min		
IF5058	Anti-TP	Syphilis	1.00 S/CO	S/P	1.00-50.00 S/CO	100 µL	15 min	CE	
IF5059	Anti-HIV	AIDS	1.00 S/CO	S/P	1.00-1000.00 S/CO	100 µL	15 min		
IF5064	HBsAg	Hepatitis B	1.00 IU/mL	S/P	1.00-100.00 IU/mL	100 µL	15 min		
NEW	IF5063	Anti-HBs	Hepatitis B	10.00 mIU/mL	S/P/WB	10.00-1000.00 mIU/mL	100 µL	15 min	
IF5084	2019-nCoV IgM/IgG	COVID-19	1.00 COI	S/P/WB		100 µL	10 min	CE	
NEW	IF5091	SARS-CoV-2 Antigen	COVID-19	1.00 COI	Nasal swab/Saliva	100 µL	15 min	CE	
NEW	IF5095	SARS-CoV-2 Neutralizing Antibody	COVID-19	Refer to User Manual	S/P/WB/ Fingertip blood	40 µL	15 min	CE	
IF5047	<i>H. pylori</i>	<i>H. pylori</i> infection	5.0 ng/mL	Stool	1.0-200.0 ng/mL	3 drops (about 100 µL)	10 min	CE	
NEW	IF5086	Influenza A/B	Respiratory viral infection	Nasal swab		100 µL	15 min	CE	
NEW	IF5136	Dengue NS1 Ag	Dengue virus infection	S/P/WB	0.50-50.00 S/CO	100 µL	15 min	CE	
Specific Protein and Rheumatism									
NEW	IF5075	RF	Rheumatoid arthritis	S/P/WB	10.0-640.0 IU/mL	10 µL	10 min	CE	
NEW	IF5076	ASO	Rheumatic fever, acute glomerulonephritis, group A streptococcal infection	S/P/WB	60.0-1370.0 IU/mL	10 µL	10 min	CE	
NEW	IF5029	Anti-CCP	Rheumatoid arthritis	S/P/WB	10.0-400.0 U/mL	10 µL	15 min	CE	
Others									
NEW	IF5077	Ferritin	Anemia/tumors	S/P	Male: 30.00-400.00 ng/mL Female: 13.00-150.00 ng/mL	10 µL	15 min	CE	
NEW	IF5069	Total IgE	Allergic disorders	S/P/WB	1.00-2000.00 IU/mL	100 µL	15 min	CE	
NEW	IF5052	PG I/PG II	Atrophic gastritis, stomach cancer	S/P	PG I: 1.0-200.0 ng/mL PG II: 1.0-100.0 ng/mL	100 µL	15 min		

Coming Soon: Folate...